



1890 Swarthmore Avenue, PO Box 2020, Lakewood, NJ 08701
 Phone: 800-526-3694, 732-363-4700, Fax: 732-364-8110
 www.toplineplumbing.com

PROJECT NAME: _____

LOCATION: _____

SPECIFIER ITEM NO. _____ **QTY:** _____

TOP-LINE PART NO. _____

TOP-LINE® Low Lead 4" (102mm) OC Deck Mount Faucet with Swing Spout, 4" (102mm) Wrist Blade Handles and Quarter Turn Ceramic Valves

TLL11-41xx-SE4Z Series

- TLL11-4106-SE4Z 6" Straight Swing Spout
- TLL11-4108-SE4Z 8" Straight Swing Spout
- TLL11-4110-SE4Z 10" Straight Swing Spout
- TLL11-4112-SE4Z 12" Straight Swing Spout
- TLL11-4114-SE4Z 14" Straight Swing Spout
- TLL11-4116-SE4Z 16" Straight Swing Spout



Solid heavy duty low lead cast body is specification and commercial quality.

Commercial Quality Features

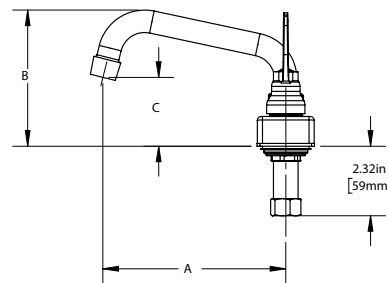
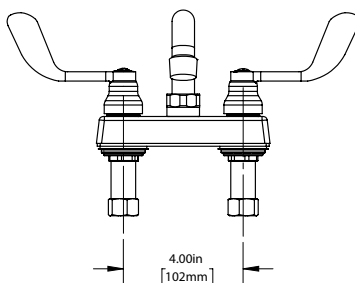
- Stainless steel tubular swing spout
- Quarter turn ceramic valves
- Built in check valves to prevent cross flow and back flow
- ADA-compliant 4' wrist blade handles
- Leak proof double O-ring spout design
- Gaskets and seals rated to 180°F

SPECIFICATIONS:

Low Lead Deck Mount Faucet to be TOP-LINE TLL11-41xx-SE4Z Series in the following configuration:

- _____ TLL11-4106-SE4Z 6" Straight Swing Spout
- _____ TLL11-4108-SE4Z 8" Straight Swing Spout
- _____ TLL11-4110-SE4Z 10" Straight Swing Spout
- _____ TLL11-4112-SE4Z 12" Straight Swing Spout
- _____ TLL11-4114-SE4Z 14" Straight Swing Spout
- _____ TLL11-4116-SE4Z 16" Straight Swing Spout

Faucet body to be constructed of polished chrome plated brass. Handles to be 4" wrist blade style. Supply inlets to be 4" on center. Valves to be 1/4 turn ceramic type. Spout to be stainless steel swing style with leak proof double O-ring seal design. 2.2gpm aerator @ 60psi standard aerator.



Dimensions shown in inches (mm) are for reference only and are subject to change.

1-1/8" (29mm) holes for deck are recommended to accommodate 1/2" supply nipples
 1/2" NPSM Male Inlet
 Operating Temperature: 40-180°F (5-83°C)
 Operating Pressure: 15-125psi

Approximate shipping weight - 4 lbs
 Warranty - 2 years parts

MODEL NO.	A	B	C
TLL11-4106-SE4Z	6.11" (155mm)	4.55" (115mm)	2.30" (58mm)
TLL11-4108-SE4Z	8.11" (206mm)	4.98" (126mm)	2.73" (69mm)
TLL11-4110-SE4Z	10.11" (257mm)	5.40" (137mm)	3.15" (80mm)
TLL11-4112-SE4Z	12.11" (308mm)	5.83" (148mm)	3.58" (91mm)
TLL11-4114-SE4Z	14.11" (358mm)	6.26" (159mm)	4.00" (102mm)
TLL11-4116-SE4Z	16.11" (409mm)	6.68" (170mm)	4.43" (113mm)

