

PROJECT NAME: _____

LOCATION: _____

SPECIFIER ITEM NO. _____ **QTY:** _____

ENCORE PART NO. _____

Encore[®] Quik-Fil[™] Wall Mount Pre-Rinse Assembly with Inline Vacuum Breaker

KL34 Series

- KL34-1000-BR No Add-On Faucet
- KL34-1010-BR 10" Add-On Faucet
- KL34-1012-BR 12" Add-On Faucet
- KL34-1014-BR 14" Add-On Faucet
- KL34-1016-BR 16" Add-On Faucet
- KL34-1022-BR 22" Add-On Faucet



Approximate shipping weight - 13 lb
 Warranty - 3 years parts

Low-Flow Spray Valve

- 1.15gpm fan spray standard
- Spray head hook holds spray head away from work area when not in use
- Heat resistant, non-marring, impact resistant bumper will not fatigue under extreme operating temperatures

Encore Premium Hose Feature

- 3-ply nylon reinforced Santoprene[®] inner hose provides maximum durability
- Interlocking helical coils of stainless steel outer hose shroud protect inner hose
- Patented stainless steel strain relief spring transfers and distributes load stress to significantly improve hose life
- High pressure hydraulic fittings on hose ends tested to 400psi
- Washerless design incorporates temperature resistant O-rings to provide leak-proof seal on all hose assemblies and hose grips

Kool Grip[™] Hose Grip

- Reduces heat transfer to the hand; stays up to 30 degrees cooler than competitors' grips
- Ergonomic spray handle fits comfortably in even small hands and is easy to use

Model	Flow Rate*	Valves	Add-On Faucet	Wall Bracket
KL34-1000-BR		Compression	None	Yes
KL34-1010-BR	35 gpm	Compression	10" (254mm)	Yes
KL34-1012-BR	35 gpm	Compression	12" (305mm)	Yes
KL34-1014-BR	35 gpm	Compression	14" (355mm)	Yes
KL34-1018-BR	35 gpm	Compression	18" (457mm)	Yes
KL34-1022-BR	35 gpm	Compression	22" (508mm) Jointed	Yes

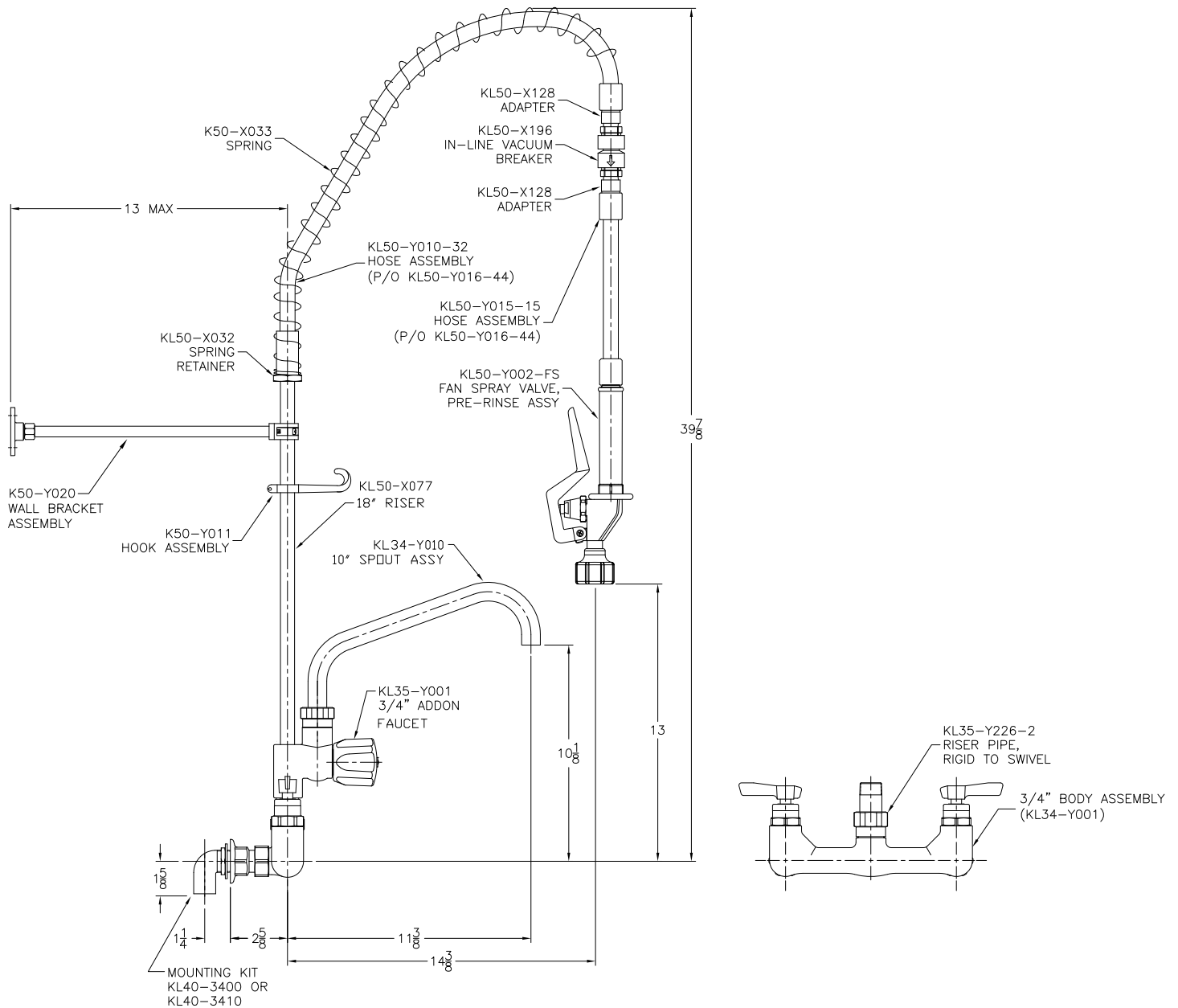
*Add-on faucet @ 60 psi



Certified to NSF/ANSI 61
 Section 9-G

KL34 Series Quik-Fil™ Wall Mount Pre-Rinse Assembly

PREMIUM PLUMBING PRODUCTS
Encore[®]
www.componenthardware.com



SPECIFICATIONS:

Quik-Fil Wall Mount Pre-Rinse Assembly to be Encore KL34 Series Model _____.

Pre-rinse body to be constructed of polished chrome plated brass with total lead content less than 0.25% by weighted average. Pre-rinse hose to be constructed of 3-ply nylon reinforced Santoprene[®] permanently secured with high pressure hydraulic fittings pressure tested to 400 psi. Hose to be of washerless, leak-proof design, protected by interlocking helical stainless steel coils for maximum protection and flexibility. Patented stainless steel strain relief spring transfers load stress. Heavy-duty ergonomic gooseneck spring ensures proper hose position. Riser to include spray head hook to hold spray head away from work area when not in use. Spray assembly to be equipped with Kool Grip™ handle to reduce heat transfer to hand.

1-1/2" (29mm) holes for wall are recommended to accommodate 1/2" supply nipples.

3/4" NPT Female Inlets

Operating Temperature: 40-180°F (5-83°C)

Operating Pressure: 20-125psi

Dimensions shown in inches (mm) are for reference only and are subject to change.