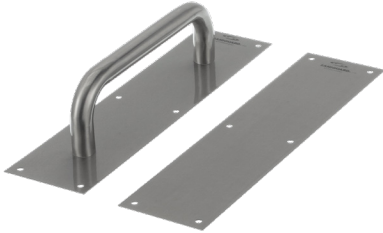




PRODUCTS WITH ANTIMICROBIAL PROTECTION BUILT-IN

- ANTIMICROBIAL PRODUCT PROTECTION INHIBITS THE GROWTH OF BACTERIA, MOLDS AND FUNGI, WHICH CAN CAUSE ODORS, STAINING AND PRODUCT DETERIORATION AND ELIMINATES FINGERPRINTS
- SANIGUARD® PRODUCT PROTECTION WILL LAST FOR THE USEFUL LIFE OF THE PRODUCT



PULL/PUSH PLATES

- ALL STAINLESS STEEL CONSTRUCTION RETRO-FITS TO MOST COMMON PUSH/PULL PLATE HOLE-PATTERNS

MODEL NO. P75-5000



SANIGRASP™ DOOR HANDLE

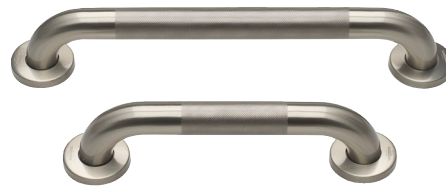
- HEAVY DUTY CONSTRUCTION MOUNTING HARDWARE INCLUDED
- FULL 1" ANGLED TUBULAR PULL FOR OPENING EASE WITH THE FOREARM
 - HOLE PATTERNS TO MATCH MOST STANDARD DOOR PUSH-PULL PLATES MAKE RETRO-FIT EASY
- ELIMINATES THE NEED TO USE YOUR HAND TO OPEN RESTROOM DOOR AFTER WASHING YOUR HANDS
 - ADA AND ABA COMPLIANT

MODEL NO. SG-101



SMOOTH FINISH GRAB BAR

MODEL NO.	DIMENSION
GBS15-1112-Q	12" (305mm)
GBS15-1116-Q	16" (406mm)
GBS15-1118-Q	18" (457mm)
GBS15-1124-Q	24" (610mm)
GBS15-1130-Q	30" (762mm)
GBS15-1132-Q	32" (813mm)
GBS15-1136-Q	36" (914mm)
GBS15-1142-Q	42" (1067mm)
GBS15-1148-Q	48" (1219mm)



KNURLED FINISH GRAB BAR

MODEL NO.	DIMENSION
GBS15-4112-Q	12" (305mm)
GBS15-4116-Q	16" (406mm)
GBS15-4118-Q	18" (457mm)
GBS15-4124-Q	24" (610mm)
GBS15-4130-Q	30" (762mm)
GBS15-4132-Q	32" (813mm)
GBS15-4136-Q	36" (914mm)

CONTACT US FOR OUR FULL OFFERING OF SANIGUARD® PROTECTED PRODUCTS

NOTE: SANIGUARD® PRODUCT PROTECTION IS DESIGNED TO KEEP THE PRODUCT FRESHER AND CLEANER BETWEEN NORMAL CLEANING ROUTINES. IT IS NOT A DISINFECTANT AND WILL NOT PROTECT USERS OR OTHERS AGAINST FOOD-BORNE ILLNESS OR DISEASE. ALWAYS USE GOOD HYGIENE AND CLEANING PRACTICES.



PRODUCTS WITH ANTIMICROBIAL PROTECTION BUILT-IN

- ANTIMICROBIAL PRODUCT PROTECTION INHIBITS THE GROWTH OF BACTERIA, MOLDS AND FUNGI, WHICH CAN CAUSE ODORS, STAINING AND PRODUCT DETERIORATION AND ELIMINATES FINGERPRINTS
- SANIGUARD® PRODUCT PROTECTION WILL LAST FOR THE USEFUL LIFE OF THE PRODUCT



SANISHOWER HAND SHOWER WITHOUT SHUT-OFF

- ECO-FRIENDLY HAND SHOWER WITH SANIGUARD ANTIMICROBIAL
- RETRO-FITS TO MOST BRANDS OF HAND SHOWERS CURRENTLY ON THE MARKET
- GENTLE SPRAY PATTERN

MODEL NO.	DESCRIPTION
SS10-0100	2.0GPM
SS10-0115	1.5GPM
SS10-0117	1.75GPM



SANISHOWER HAND SHOWER WITH SHUT-OFF

- ECO-FRIENDLY HAND SHOWER WITH SANIGUARD ANTIMICROBIAL
- RETRO-FITS TO MOST BRANDS OF HAND SHOWERS CURRENTLY ON THE MARKET
- GENTLE SPRAY PATTERN

MODEL NO.	DESCRIPTION
SS10-0200	2.0GPM
SS10-0215	1.5GPM
SS10-0217	1.75GPM



SANISHOWER SHOWER HEAD

- ABS PLASTIC

MODEL NO.	DESCRIPTION
SS20-2000	2.0GPM
SS20-2015	1.5GPM
SS20-2017	1.75GPM



SANISHOWER HAND SHOWER HOSE

- RETRO-FIT TO MOST HAND SHOWER SYSTEMS

MODEL NO.	DESCRIPTION
SS15-Y010-60	60" LONG
SS15-Y010-72	72" LONG

CONTACT US FOR OUR FULL OFFERING OF SANIGUARD® PROTECTED PRODUCTS

NOTE: SANIGUARD® PRODUCT PROTECTION IS DESIGNED TO KEEP THE PRODUCT FRESHER AND CLEANER BETWEEN NORMAL CLEANING ROUTINES. IT IS NOT A DISINFECTANT AND WILL NOT PROTECT USERS OR OTHERS AGAINST FOOD-BORNE ILLNESS OR DISEASE. ALWAYS USE GOOD HYGIENE AND CLEANING PRACTICES.