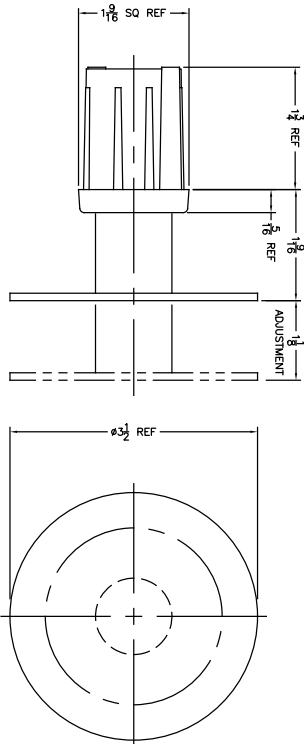


Component Hardware® 1-1/2" Square
 Stainless Steel Clad Zinc Die Cast Adjustable
 Flanged Foot Insert

A14-0653-C



1-1/2" Square Stainless Steel Clad Zinc Die Cast Adjustable Flanged Foot Insert

Heavy Duty Construction

- For use with 1-1/2" x 1-1/2" 16-gauge square tubing
- Stainless steel clad zinc die cast construction
- 1-1/2" height in fully closed position
- Adjustable toe permits leveling of equipment up to 1-1/8"
- 3-1/2" OD 12-gauge stainless steel flanged toe
- 2,000 lbs static load capacity

Specifications

Stainless steel clad zinc die cast adjustable flanged foot insert to be Component Hardware A14-0653-C. Insert to be 1-1/2" high and adjustable to 1-1/8" for leveling on job site.

Dimensions shown in inches (mm) are for reference only and are subject to change.

