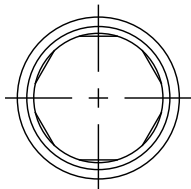
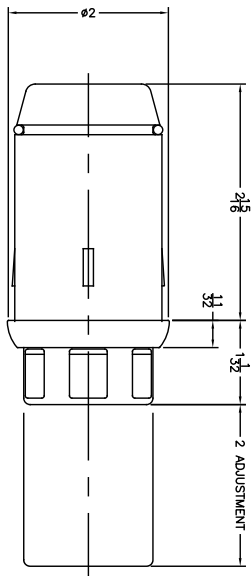


Component Hardware® 2" Round Stainless Steel Clad Zinc Die Cast Adjustable Hex Foot Insert

## A11-0851-C



Dimensions shown in inches (mm) are for reference only and are subject to change.

2" Round Stainless Steel Clad Zinc Die Cast Adjustable Hex Foot Insert

### Heavy Duty Construction

- For use with 2" OD 16-gauge round tubing
- Stainless steel clad zinc die cast construction
- 1" height in fully closed position
- Adjustable toe permits leveling of equipment up to 2"
- Wrench flats on hex toe permit easy adjustment
- 2,300 lbs static load capacity

### Specifications

Stainless steel clad zinc die cast adjustable foot insert with hex toe to be Component Hardware A11-0851-C. Insert to be 1" high and adjustable to 2" for leveling on job site.



COMPONENT