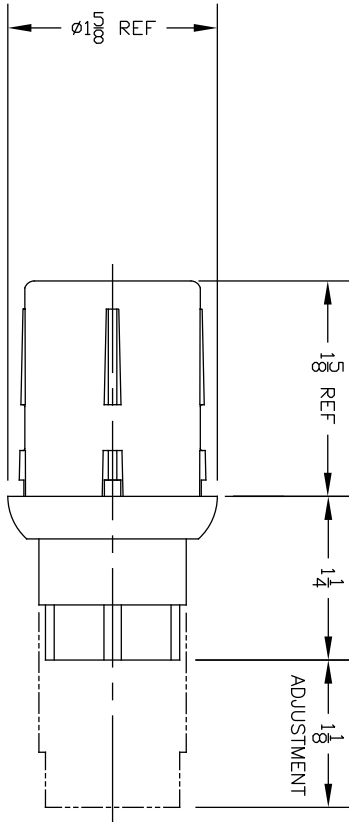


Component Hardware® 1-1/2" Round  
 Natural Finish Zinc Die Cast Adjustable  
 Hex Foot Insert

## A10-0611-C



Dimensions shown in inches (mm) are for reference only and are subject to change.

1-1/2" Round Natural Finish Zinc Die Cast Adjustable Hex Foot Insert

**Heavy Duty Construction**

- For use with 1-1/2" OD 16-gauge round tubing
- Natural finish zinc die cast construction
- 1-1/4" height in fully closed position
- Adjustable toe permits leveling of equipment up to 1-1/8"
- Wrench flats on hex toe permit easy adjustment
- 2,000 lbs static load capacity

**Specifications**

Zinc diecast adjustable foot insert with hex toe to be Component Hardware A10-0611-C. Insert to be 1-1/4" high and adjustable to 1-1/8" for leveling on job site.



COMPONENT