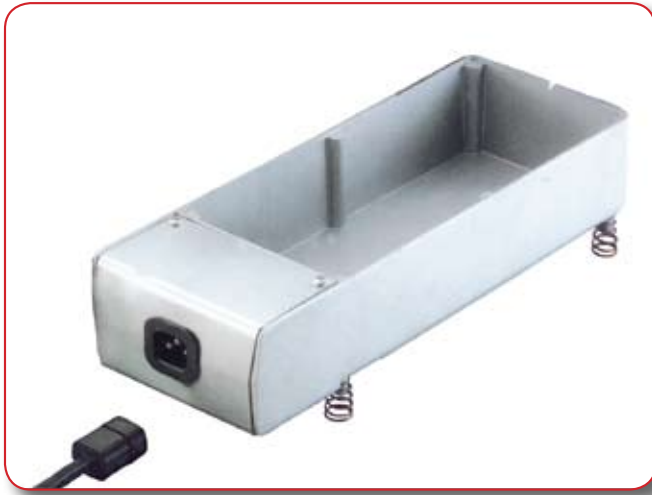


CHG's Condensate Evaporator



NOW APPROVED TO LATEST CE SPECIFICATIONS



- Energy Efficient Thermostatic Control
 - CE Approved Plug, Receptacle and Cordset
 - Insulator Mandated by CE
 - Solid State...PTC Controlled...Self Regulating
 - 160 and 254 Watt Models
 - 230 Volts
 - Die Cast Aluminum Construction
 - 50 oz. (1500ml) Capacity
 - CE Color-Coded Wires
 - Removable Cordsets, 18" (460mm) Long*
- * Longer cordsets with or without molded plugs are available upon application

1	CE approved receptacle
2	CE approved cord with European color-coded wires
3	CE approved plug assembly
4	CE approved thermostat uses up to 2/3 less energy
5	CE approved silicone insulator pad
6	CE approved silicone heater pad
7	CE mandated dielectric shield

